

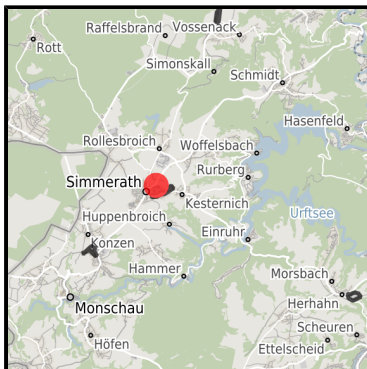
# EXPOSÉ

## Gewerbegebiet Simmerath

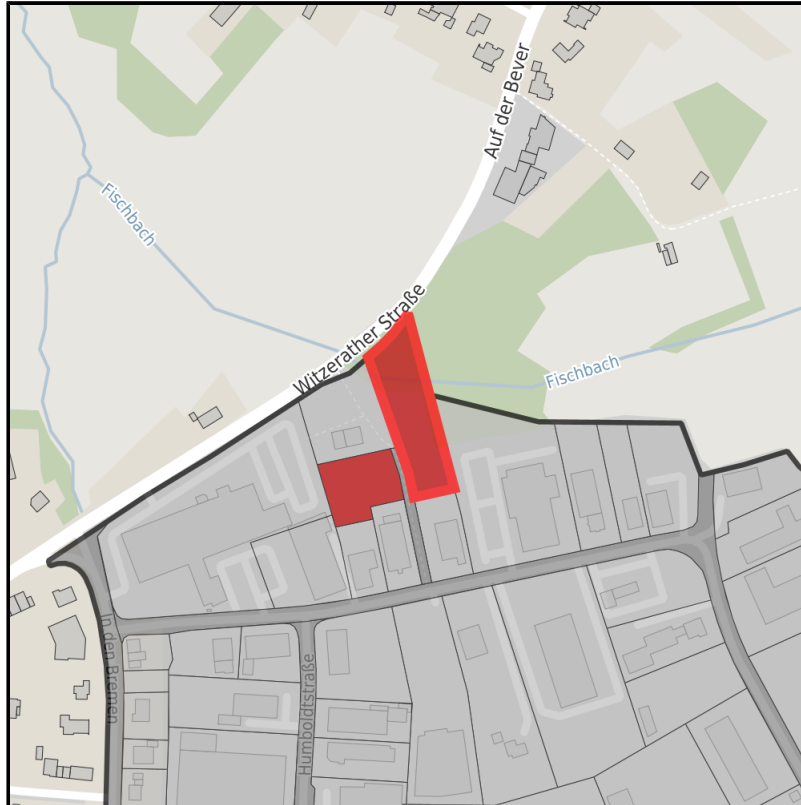
Ort: Simmerath



Regional overview



Municipal overview



Detail view

### Parcel

Area size	3,319 m <sup>2</sup>
Availability	Immediately available area
Area designation	Commercial zone
Divisible	No
24h operation	No

## EXPOSÉ

### Gewerbegebiet Simmerath

Ort: Simmerath

### Details on commercial zone

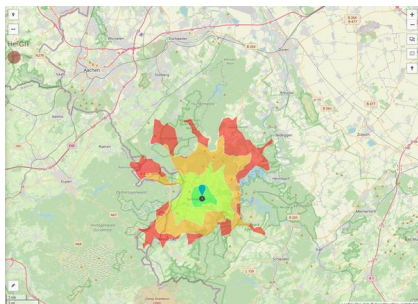
Business park Simmerath

The Simmerath commercial zone has existed since 1977 on an area of approx. 30 ha. At present approx. 120 enterprises are settled here. The commercial use is predominantly characterized by trade. The Simmerath commercial zone provides approx. 950 jobs. It is a supraregionally well-known industrial area.

Main industry sector	Trade
Main companies	Fa. Rudi Henn Hochbau GmbH, Fa. Mobau Thelen Baustoffhandel, Holzfachmarkt Scherf
Industrial tax multiplier	420.00 %
Price	70.00 - 95.00 € / m <sup>2</sup>
Area type	GE

### Links

<https://www.gistra.de>



Erreichbarkeit in 20 Minuten: 39.000 Einwohner

## EXPOSÉ

### Gewerbegebiet Simmerath

Ort: Simmerath

### Transport infrastructure

Freeway	A44	20 km
Airport	Maastrich	65 km
Airport	Köln-Bonn	90 km
Port	Liège (B)	60 km
Rail freight	AC-West	30 km

### Information about Simmerath

Simmerath represents an ambitious and modern community with 15,000 inhabitants. Located in the southern part of the Aachen region Simmerath is an interesting investment opportunity with excellent connection to the Netherlands, Belgium, Aachen and Cologne. Establishing, investing and expanding business in Simmerath is supported by governmental programs in order to strengthen industry structure.

Majestic beech forests, gnarled oak trees and wild rivers: Experience pure nature in the Eifel National Park. Enhance working creativity surrounded by inspiring nature.



## EXPOSÉ

**Gewerbegebiet Simmerath**

**Ort: Simmerath**

### **Contact person**

André Koll

Gemeinde Simmerath

Germany

+ 49 (0) 24 73/607 174

+49 (0)2473/607100

[akoll@gemeinde.simmerath.de](mailto:akoll@gemeinde.simmerath.de)

<http://www.simmerath.de>

In cooperation with:



**Aachener Gesellschaft für Technologietransfer und Innovation AGIT mbH**

Frank Leisten

+49(0)241 963-1050

+49(0)241 963-1033

[f.leisten@agit.de](mailto:f.leisten@agit.de)

<http://www.agit.de>