

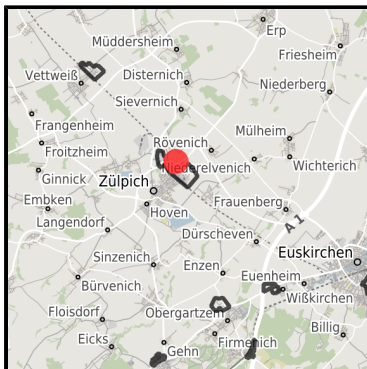
**Gewerbe- und Industriegebiet "An der Römerallee"**

**Ort: Zülpich**

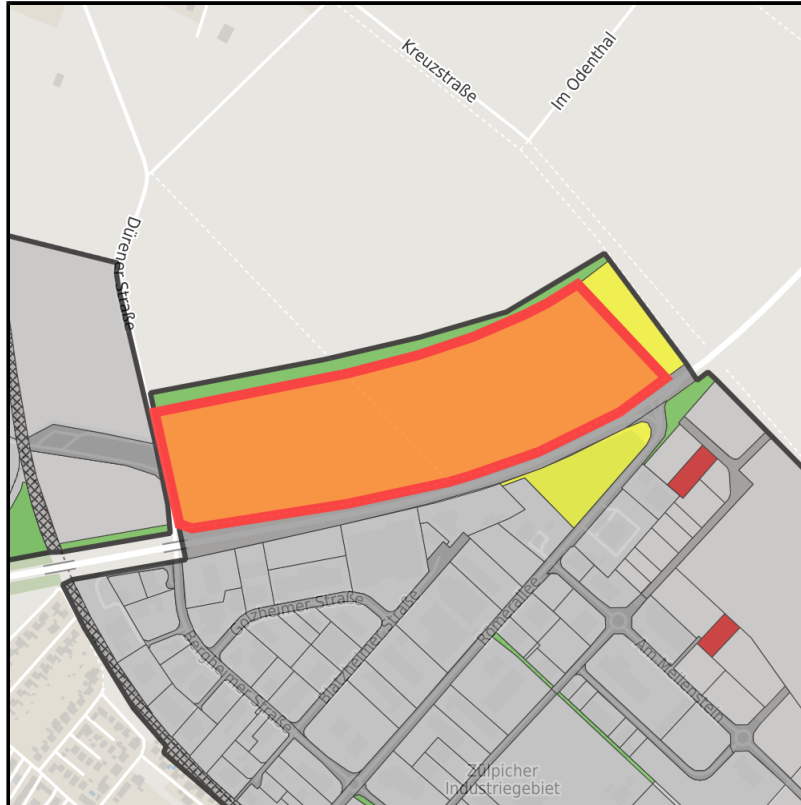
[www.germansite.de](http://www.germansite.de)



Regional overview



Municipal overview



Detail view

**Parcel**

Area size	130,500 m <sup>2</sup>
Availability	Available area within short term (< 2 years)
Area designation	Commercial zone
Divisible	Yes
24h operation	No

**Gewerbe- und Industriegebiet "An der Römerallee"****Ort: Zülpich**

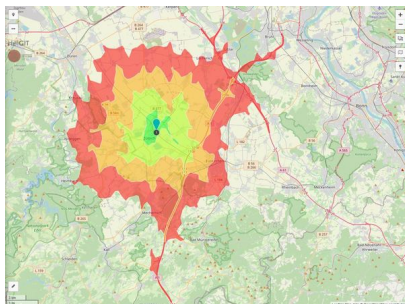
www.germansite.de

**Details on commercial zone**

The Roman Town Zülpich ... Your key to success!

The commercial zone "An der Römerallee" has already profited from its optimum location for several years. Situated centrally between the three cities of Cologne, Bonn, and Aachen it has excellent transport connections. However, the existing infrastructure at the location, particularly in terms of education, culture and leisure, have been decisive in attracting more than 80 enterprises, some of them well-known. The spaces still available are offered by the town of Zülpich at fair market terms and can be tailored to the company's needs.

Main companies	Kappa Zülpich Papier, Takasago Europe, Albis Plastic, M. Vetter
Industrial tax multiplier	415.00 %
Price	60.00 - 80.00 € / m <sup>2</sup>
Area type	GE / GI

**Links**<https://www.gistra.de>

Erreichbarkeit in 20 Minuten: 143.000 Einwohner



Gewerbegebiet "An der Römerallee"

**Transport infrastructure**

Freeway	A1	8.3 km
Freeway	A553	21.2 km
Airport	Köln-Bonn	54.9 km
Airport	Maastrich-Aachen	92.2 km
Port	Am Godorfer Köln	39.2 km
Port	Köln Niehl	53.9 km

## EXPOSÉ

### Gewerbe- und Industriegebiet "An der Römerallee"

Ort: Zülpich

[www.germansite.de](http://www.germansite.de)

### Information about Zülpich

20,000 inhabitants live in Zülpich located in the middle of the triangle Cologne-Bonn-Aachen. Advantageous transport infrastructure and a beautiful landscape distinguish Zülpich from other business locations. The history of Zülpich goes back to Latin times: Early advantage of location by the important junction Tolbiacum and recreation thermae. Today Zülpich is an idyllic small town combining peaceful atmosphere of ancient times with the comfort of modern lifestyle.



## EXPOSÉ

**Gewerbe- und Industriegebiet "An der Römerallee"**

**Ort: Zülpich**

### Contact person

Ottmar Voigt

Stadt Zülpich

Germany

+49 (0)2252/52-248

+49 (0)2252/52-299

[ottmar.voigt@stadt-zuelpich.de](mailto:ottmar.voigt@stadt-zuelpich.de)

<http://www.zuelpich.de>

In cooperation with:



**Aachener Gesellschaft für Technologietransfer und Innovation AGIT mbH**

Frank Leisten

+49(0)241 963-1050

+49(0)241 963-1033

[f.leisten@agit.de](mailto:f.leisten@agit.de)

<http://www.agit.de>