

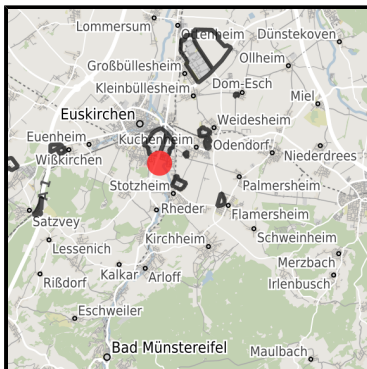
Gewerbegebiet EURO-Park Ost

Ort: Euskirchen

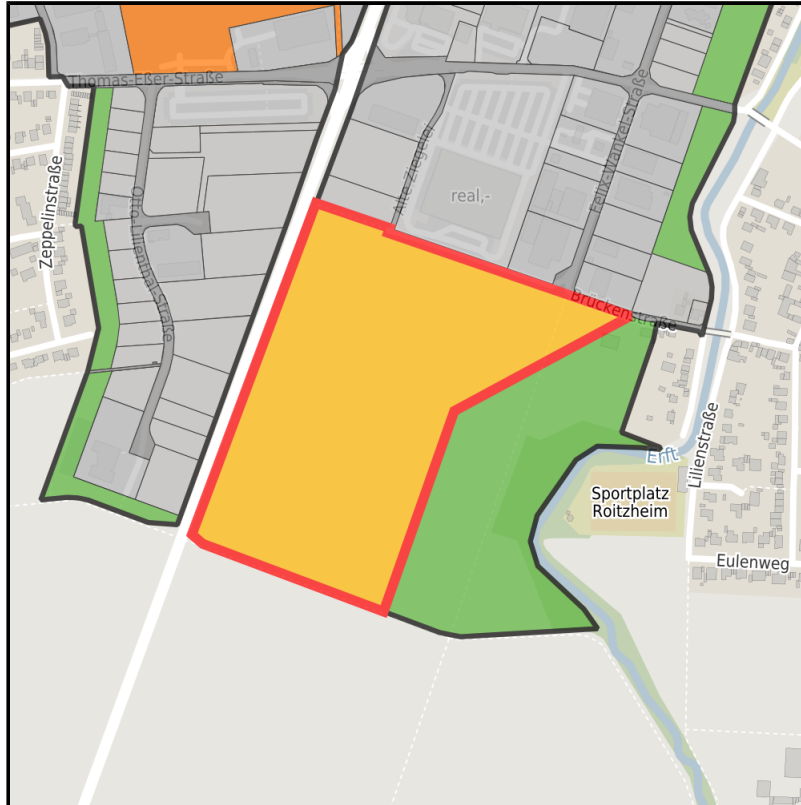
www.germansite.de



Regional overview



Municipal overview



Detail view

Parcel

Area size	117,545 m ²
Availability	Available area within medium term (2-5 years)
Area designation	Commercial zone
Divisible	Yes
24h operation	No

EXPOSÉ

Gewerbegebiet EURO-Park Ost

Ort: Euskirchen

Details on commercial zone

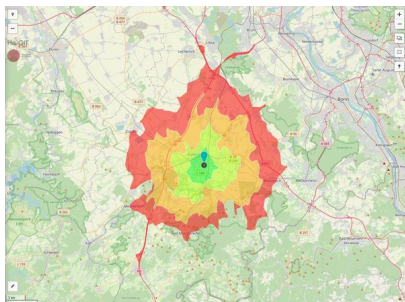
EURO-Park

In its entirety, EURO-Park is a self-contained, approx. 1.5 million m² area in the south-east of Euskirchen. With well-known companies and production facilities, this business zone forms a major focal point of Euskirchen's economy. With the development of additional spaces just a few years ago, the new EURO-Park Ost (located to the east of the B 51 toward the borough of Roitzheim) was created parallel to the existing commercial and industrial zones. Due to continuing demand for space the zone is to be extended to the north and south.

Main companies	Bünder, Schenker, Kreissparkasse Euskirchen
Industrial tax multiplier	475.00 %
Price	51.00 - 90.00 € / m ²
Area type	GE

Links

<https://www.gistra.de>



Erreichbarkeit in 20 Minuten: 140.500 Einwohner



Straßenplan EURO-Park



EURO-Park - Luftbild

EXPOSÉ

Gewerbegebiet EURO-Park Ost

Ort: Euskirchen

Transport infrastructure

Freeway	A1	5.8 km
Airport	Köln-Bonn	50.9 km
Airport	Düsseldorf	98.1 km
Port	Am Godorfer Köln	33.5 km
Port	Köln Niehl	58.4 km

Gewerbegebiet EURO-Park Ost**Ort: Euskirchen**www.germansite.de**Information about Euskirchen**

The town of Euskirchen is a thriving market town located 15 miles south of Cologne with more than 58,000 inhabitants.

The `Old Town` is the main shopping area. It is centred around Market Square which is bordered by traditional buildings, cafés and restaurants. In addition to its pleasant town centre, Euskirchen is surrounded by beautiful countryside, notably the forest around the Steinbach lake. There are also many important historic houses such as Kleeburg Castle, Veynau Castle or St Martin´s Church all within a short drive from the town centre.



Neustraße, Euskirchen



Alter Markt, Euskirchen



Steinbachtalsperre, Euskirchen

EXPOSÉ

Gewerbegebiet EURO-Park Ost

Ort: Euskirchen

GERMAN.SITE
SITES AND REAL ESTATE

www.germansite.de

Contact person

Elmar Müller M.A.

Kreisstadt Euskirchen

Kölner Straße 75

53879 Euskirchen

Germany

+49 (0)2251 / 14 441

+49 (0)2251 / 14 58 441

emueller@euskirchen.de

<http://www.euskirchen.de>

In cooperation with:



Aachener Gesellschaft für Technologietransfer und Innovation AGIT mbH

Frank Leisten

+49(0)241 963-1050

+49(0)241 963-1033

f.leisten@agit.de

<http://www.agit.de>