

## EXPOSÉ

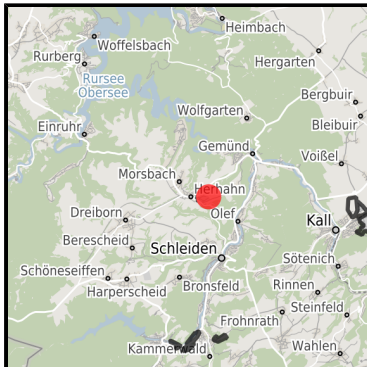
### Gewerbe- und Industriegebiet Herhahn

Ort: Schleiden

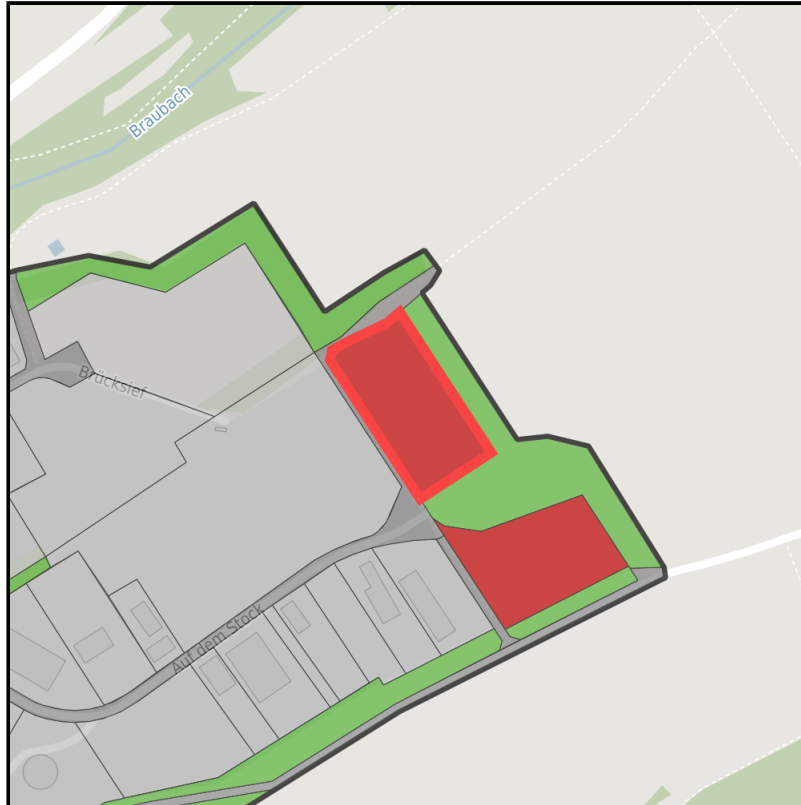
[www.germansite.de](http://www.germansite.de)



Regional overview



Municipal overview



Detail view

### Parcel

Area size	6,650 m <sup>2</sup>
Price	11.50 €/m <sup>2</sup>
Availability	Immediately available area
Area designation	Industrial area
Divisible	Yes
24h operation	Yes

## Gewerbe- und Industriegebiet Herhahn

Ort: Schleiden

[www.germansite.de](http://www.germansite.de)

### Details on commercial zone

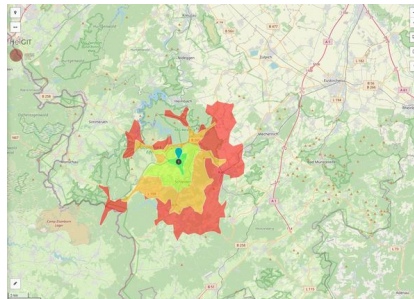
Herhahn - industrial area

In the Herhahn commercial zone (total area 165,000 m<sup>2</sup>) approx. 70,000 m<sup>2</sup> are still available for your business. The only declared industrial zone in the southern part of the Euskirchen district also offers space for companies with high emission levels. The lots still available can be parceled as required. Up to 80% of the lot area may be built on. The purchase price (including initial development and sewage connection charge) is only EUR 11.50/m<sup>2</sup>. Under certain circumstances up to 15% of investments can be subsidized.

Main companies	C.L. Rick (Paperland, Pap Star)
Industrial tax multiplier	413.00 %
Area type	GE / GI

### Links

<https://www.gistra.de>



Erreichbarkeit in 20 Minuten: 30.000 Einwohner

### Transport infrastructure

Freeway	A1	23.7 km
Airport	Köln-Bonn	78.1 km
Airport	Maastricht-Aachen	90.3 km
Port	Am Godorfer Köln	61.4 km
Port	Lüttich	80.6 km

## Information about Schleiden

The state development plan for Nordrhein-Westfalen designates Schleiden as a regional center catering for between 50,000 and 100,000 inhabitants in the Schleiden Valley catchment area. This is reflected in the local infrastructure and leisure amenities. The Schleiden Valley is a focal point in the North Eifel region and offers favorable conditions for the development tourism and commerce. In particular, it serves as a recreational area for the urban centers Cologne/Bonn, Düsseldorf and Aachen.



## EXPOSÉ

**Gewerbe- und Industriegebiet Herhahn**

**Ort: Schleiden**

**GERMAN.SITE**  
SITES AND REAL ESTATE

[www.germansite.de](http://www.germansite.de)

### Contact person

Bianka Renn

Stadt Schleiden

Germany

+49 (0)2445/89-318

+49 (0)2445/89-250

[bianka.renn@schleiden.de](mailto:bianka.renn@schleiden.de)

<http://www.schleiden.de>

In cooperation with:



**Aachener Gesellschaft für Technologietransfer und Innovation AGIT mbH**

Frank Leisten

+49(0)241 963-1050

+49(0)241 963-1033

[f.leisten@agit.de](mailto:f.leisten@agit.de)

<http://www.agit.de>